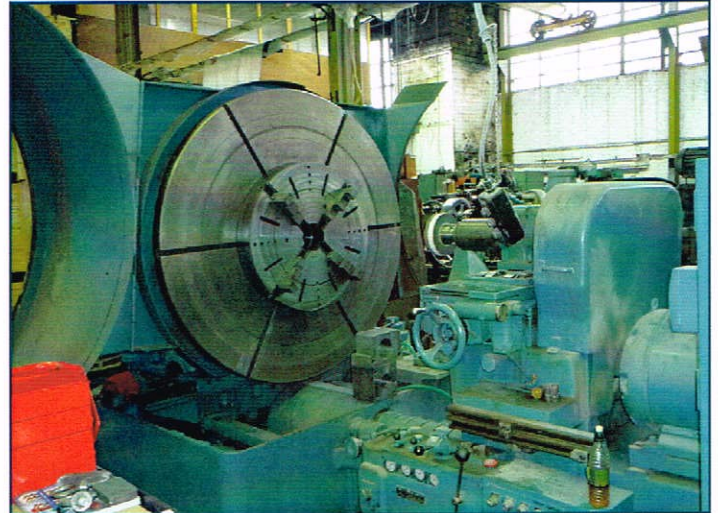
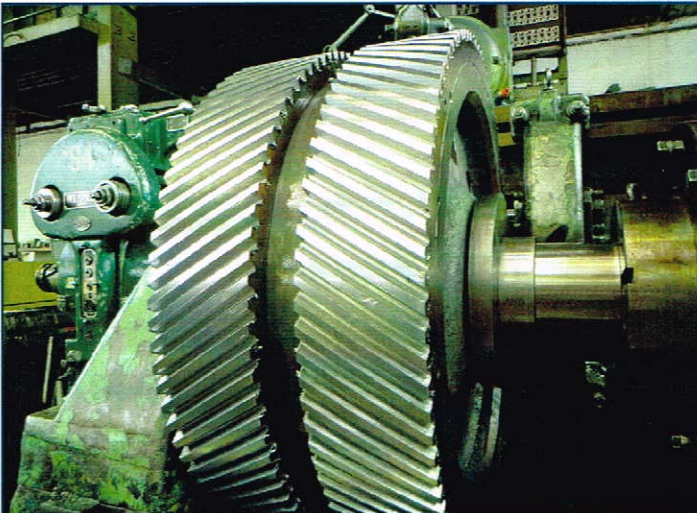
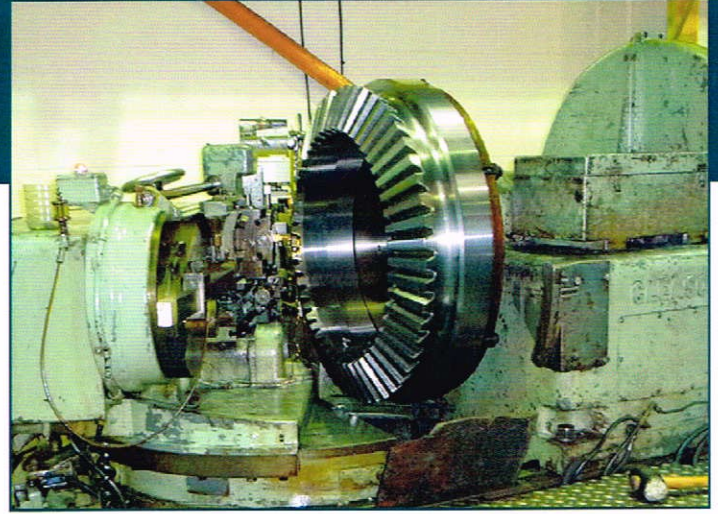
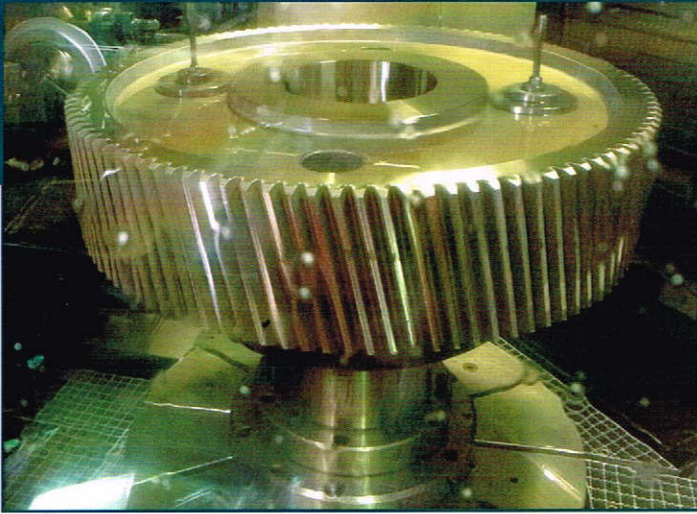




SBT GEARING SOLUTIONS LTD



SBT Gearing Solutions Ltd has manufacturing rights and intellectual property for the Anderton Range of Clutch and PTO Units.

Nick Goodhew
07989 638 008
nick@sbtgears.co.uk

Matthew Smalley
07713 252 567
matt@sbtgears.co.uk

Dean Moore
07841 327 827
dean@sbtgears.co.uk

TEL: 0161 764 4862 • www.sbtgears.co.uk

CONVENTIONAL MACHINING

- **Vertical Boring** – up 52" diameter with profile turning capabilities.
- **Centre Lathes** – 3.8 metres between centres and up to 1200mm diameter.
- **Milling** – 1500mm x 500mm table capacity.
- **Slotting**: 4 machines with varying stroke lengths.
 - 1 x Butler 6" stroke
 - 1 x Ormerod 13" stroke
 - 1 x Butler 21" stroke
 - 1 x Butler 30" stroke

GRINDING

- **Internal Grinding** – up to 1500mm.
- **External Grinding** – up to 1400mm.
- **Cylindrical Grinding** – 4.8 metres between centres up to 600mm Dia.

GEAR GRINDING

- **CNC Gear Grinding** – 1600mm Dia x 1000mm face width up to 45 MOD to DIN 1. (Hoffler Rapid 1600) including inspection capabilities and graphing for lead, involute and pitch.
- 2 x Niles 630
- 1 x Niles 1250
- 1 x Reishaeur NZA
- **Spline Grinding** – 900mm between centres x 200 Dia. Straight & Involute Splines.

WORM & WHEELS

- Various Machines with sets mating up to 32" Centres

GEAR HOBBING

- One – Modul 3150 (capacity extended to 4250mm Dia. x 30 MOD) with single indexing and internal cutting head capabilities
- One – Modul ZFWZ 2000/3 – which has 2 cut cycle, single index and crowning facilities, capable of cutting gears up to 2 Meter Dia. x 800mm face up to 25 MOD
- One – ZFW10 Precision Gear Hobber, producing gears up to DIN Grade 6 and up to 16 MOD. 1500mm Dia. x 1000mm face width. Equipped to barrel hob and single index.
- One – Pfauter P900 (max 900mm x 16 MOD)
- One – Modul ZFWZ 800 (max 900mm x 16 MOD)
- One – Pfauter P630 (2 cut cycle & crowning max 630mm x 10 MOD)
- One – Pfauter P400 (400mm x 10 MOD)
- One – Tos 71 (750mm x 10 MOD)
- One – Liebherr ET 1200 (1250mm x 32 MOD)
- One – Heckert ZFWG (250mm Dia x 2 metre x 8 MOD)
- One – Heckert GFLV (250mm Dia x 3 metre x 8 MOD)

BEVEL GEARS

- One – G & E 60S2 Bevel Gear Rougher.
- Seven – 24A Gleason Coniflex Bevel Generator (900mm Dia x 25MOD)
- One – 154 Gleason Bevel Planer (max 1500mm Dia x 40 MOD)
- Three – 54 Bevel Planer (max 1500mm Dia x 40 MOD)
- One – 12" Gleason Straight Bevel Generator (max 600mm Dia x 8 MOD)
- One – 28" Hypoid Gear Generator.
- One – G & E 60 B.

GEAR SHAPING

- One – Sykes 5E (1500mm x 16 MOD) equipped with straight and 30 degree double helical guides.
- Two – Sykes 3C (1000mm x 10 MOD) equipped with straight and 30 degree double helical guides.
- One – Drummond Maxicut 3A
- One – Drummond Maxicut 2A
- One – MAAG 8H 180/300 (3000mm x 32 MOD) max face width 450 (equipped with STD internal & oblique cutting heads)
- One – Sunderland 16 (800mm x 14 MOD)

